

We look forward to the day



when we say to a friend,



"I live in Burngreave," and they reply,



"That's nice, I wish I did."



**Burngreave New Deal for Communities
Year 3: 2003/04 Annual Report**

The vision of BNDfC is simple:

We look forward to the day when we say to a friend, "I live



Theme Managers

Jon Cowley:

Education – 292 2908

Trywell Kalyata:

Employment & Enterprise – 292 2907

Joice Richards:

Housing and Environment – 279 6934

Ian Clifford:

Over-arching – 279 6933

Ausmah Ali/Magda Boo:

Crime – 292 0394

Sahdya Ali/Magda Boo:

Health – 292 2905

For information about any of the themes or projects and services delivered by BNDfC, please contact the relevant Theme Manager.

The Burngreave story so far...

By John Clark,
Chief Executive,
Burngreave New Deal
for Communities.



Burngreave New Deal for Communities (BNDfC) was awarded £52m by the Government from 2001-2011 to help regenerate Burngreave. Working in partnership, our main aim is to change and develop local services and ensure that BNDfC brings long-term improvements to mainstream services in the area.

In order to achieve this, the last 12 months in particular have seen an enormous amount of progress thanks to the hard work of a dedicated Partnership Board and New Deal staff team, the local community and a variety of statutory and voluntary organisations.

One of our key successes so far is the Advancing Together Agreement with Sheffield City Council, through which we have purchased additional services in response to the priorities identified by local people.

This has enabled us to provide Neighbourhood Wardens, extra street cleaning, new and improved street lighting, maintenance grants for homeowners and secure specialist support within the Council to assist with the redevelopment of Sorby House and Vestry Hall.

In return Sheffield City Council have agreed to:

- Maintain existing levels of funding and services in the New Deal area for the next three years.
- Fund/absorb project management costs where the activity is part of the Council's area of responsibility thereby ensuring that additional funding buys additional services.
- Give priority to the recruitment of local people for all posts created through BNDfC funding.

The Vision

in Burngreave," and they reply, "That's nice, I wish I did."

BNDfC will also be entitled to participate in the recruitment and selection process.

- Ensure staff working in the area are clearly identified as being supported by the BNDfC partnership.
- Work with the BNDfC Partnership Board, theme groups and residents to identify good practice in service delivery that can be adopted for the future.

More information about what New Deal funds have been used for and what this has helped us achieve in Burngreave is contained throughout the report.

I can assure you that the Burngreave New Deal for Communities Partnership Board and staff team will continue to work with you to make further improvements in the key areas of crime, employment, education, health, housing, the environment and building the capacity of the community.

Celebrating our achievements

By Rose Ardron, Chair of the BNDfC Partnership Board

It's great to be able to present this report to you, setting out what New Deal has been doing in Burngreave. This is part of our commitment to provide information and improve communication. It is also an opportunity to stand back and celebrate what has been achieved so far.

New Deal is now starting to become visible around the area and this will increase over the coming months. There's still a lot that needs to be done but this doesn't take away from the value of what is now underway - a reflection of the hard work and contributions from the Burngreave community, the New Deal Partnership Board and staff team and our partners.

Partnership Board Members

Community Reps



ROSE ARDRON
(Chair)



KELVIN PINE



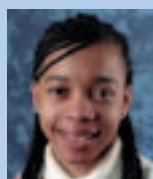
ADAM JONES



AISHA SPECIAL K



CAROL JONES



NATASHA
McFARLANE



TONY HALL



MOHAMMED
YOUNIS

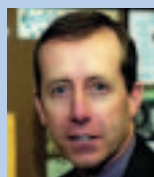


MUHAMMAD IQBAL
(Vice Chair)



DORRETT
BUCKLEY GREAVES

Statutory Reps



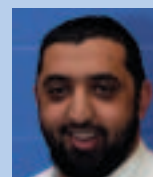
ANDY BUCK



MARTIN
HEMINGWAY



LINDA REGAN



IBRAR HUSSAIN



JOANNE RONEY

Voluntary and Community Sector Reps



JOHN VINCENT
and STEVE COOK BCAF Rep



AHMED GURNAH



AHMED HUSSEIN



SEATON GOSLING

Thanks to everyone for their part in working to improve the area and make it a better place for us all to live and work - let's carry on working and celebrating together!

Crime

'A community protective of people in which reduction in crime has been brought about through developing an open relationship between agencies and the community.'

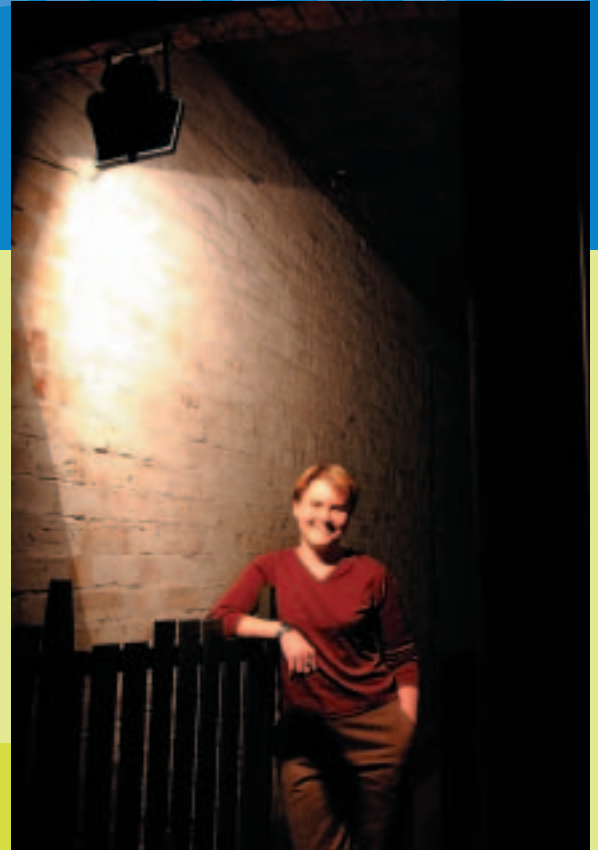
Safety in the home and out in the community continued to be the focus of projects within the crime theme in year three.

Key projects included:

- The New Deal Police Team consisting of five officers provides a community policing service in addition to the mainstream police resources.
- The Safer Home Scheme has provided security measures so that local residents feel safe and secure in their homes. These include burglar alarms, smoke alarms, door locks, window locks, chains, spy holes, doorframe strengthening and alley gates.
- The Anti-Social Behaviour Team for Burngreave has been established in response to reports of neighbour nuisance. It provides a range of interventions from arranging mediation to applying for Acceptable Behaviour Contracts and Anti-Social Behaviour Orders.
- The Community Wardens Scheme is now at work in the area. The wardens act as the "eyes and ears" of the community and provide informal patrols, a walking bus service to primary schools, help keep parks and green spaces clean and safe to play. They also report issues such as litter nuisance and dumping.
- The Spital Hill CCTV scheme installed six cameras in and around this main corridor into Burngreave, acting as a deterrent to serious crime and encouraging increased use of local shops.

Main achievements:

- 190 street lights were improved/installed
- 170 homes were fitted with additional security
- 8 local residents employed as community wardens
- 6 CCTV cameras were installed
- 5 additional police officers were employed



Case Study:

Feeling safer

Burngreave resident Lin Harrison feels a lot safer in her own home since she had a new burglar alarm fitted - thanks to BNDfC's safer homes project.

Lin has only been in her house for a year and a half and says she wouldn't have got round to fitting the alarm herself after all the expense of buying the house and moving in.

Before she had the alarm fitted, she had already had a bag stolen from downstairs, but since then, on a night when both she and her next door neighbour were out - he was burgled and Lin wasn't!

Lin's neighbour has now also benefited from the safer homes scheme. As well as having a burglar alarm fitted in his house, the joint alleyway between the two houses now has a bright security light, adding to the general security of the area.

"Having the burglar alarm fitted was very straightforward," says Lin. "And when I had a minor problem with one of the sensors, it was sorted out really quickly. I feel much safer since I've had the alarm and would definitely recommend the scheme to other local residents."

Education

'To encourage a step change in the development of a thriving learning culture in Burngreave.'

The key tasks during the third year were developing the strategy, implementing activities to support school children to improve their results and supporting adults into learning.



Key projects included:

- Burngreave Community Learning Campaign employs 18 local residents as learning assistants and has recruited over 500 adults into learning.
- Three community language schools in Arabic, Urdu and Somali have been established involving 214 young local people aged seven to 13 each week.
- The introduction of four community-based study support after-school clubs which cater for 179 young local people.
- Support for Catch the Drift and the Cellar Space projects which work with young local people not attending school.
- Four Community Education Co-ordinators working across seven schools to create adult education and family learning opportunities for parents. Over 30 courses and nine fun days have involved 1,048 participants.
- An agreement with the Local Education Authority has been set up to support the development of school-based projects to provide additional bi-lingual classroom assistants, support for young people in danger of exclusion, breakfast clubs, teaching of community languages, an awards celebration and extended use of the schools by parents and the community.

Main achievements:

- 1,370 local children received book tokens
- 500 local children participated in extra-curricular activity
- 705 local people on adult education courses
- 214 young local people involved in events
- 200 local people benefiting from community language schools

- 179 local children supported through study support
- 85 local children supported through mentoring
- 4 schools assisted to develop community activity

Case Study:

Developing my career

The Burngreave Community Learning Campaign (BCLC) gave local resident Sarah Aref-Taha the break she needed to pursue her dream career in teaching. After three years as a secretary, which she no longer enjoyed, Sarah saw a BCLC job advert for a Learning Assistant.

She got the job and a year later she is indebted to the campaign for providing her with the skills and experience she needed to develop a career in teaching.

Providing classroom support to adults in Burngreave for basic IT skills and English for speakers of other languages, Sarah says knowing she is helping people is her main inspiration.

"It has been very fulfilling to work with so many different people and help them overcome barriers to learning that now mean they can progress and develop themselves further.

"On a personal level, the learning campaign has encouraged and supported me in my personal and

career development and financially too. With its help and support, I have now been accepted on the Postgraduate Certificate of Education course at Sheffield Hallam University to train to be a teacher."



Employment and Enterprise

'Burngreave will be an area where unemployment is low in a thriving local economy. Local people are properly educated and trained, have access to local support and the opportunities and skills for work.'

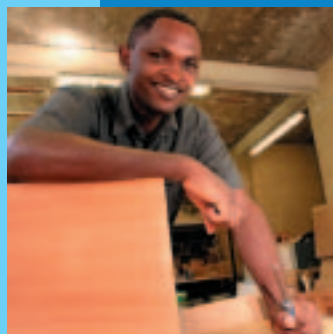
The Employment and Enterprise theme concentrated on employment support and job taster programmes, business security measures and promoting enterprise during 2003/2004.



Key projects included:

- Burngreave JobNet is a local employment information and career guidance centre supporting local residents to access jobs and training opportunities.
- The Business Enterprise Champion works with local residents and companies to assist in the development of new business start-ups and the expansion of existing businesses respectively.
- BNDfC NETT is a low cost driving school offering affordable driving lessons to Burngreave residents so that they can get driving licences and improve their chances of getting jobs. The project is also encouraging local people to train and get employment in the transport sector.
- BNDfC Intermediate Labour Market provides local people with training and work experience, enabling them to develop the skills required to secure full time employment.
- The Burngreave Construction Initiative provides local residents with training and employment opportunities in the construction industry.
- Language Support Agency was set up to offer training to local people in multilingual interpretation and translation in order to meet the demand for this kind of service in the community. The project is also a social enterprise.

- 49 jobs have been created by New Deal projects
- 4 local people have been assisted into self employment
- 27 local people were being trained in translation and interpretation
- 10 local people placed on the construction initiative



Case Study:

Building a brighter future

Thanks to the Burngreave Construction Initiative, Paul Ndegwa is now a fully trained kitchen fitter and has worked his way up to a supervisory role as a Contractor Administrator.

By registering with Burngreave Jobnet on Spital Hill, Paul secured employment with Chantry Builders Ltd as a trainee on the programme. 14 months later he has come on in leaps and bounds and is one of the most successful trainees the company has employed.

"Being part of the Burngreave Construction Initiative has had a really big impact on my life. I always wanted to get a job not only to earn money but so I could also develop myself and my career. This opportunity has been everything I hoped it would be and more.

"So far things have gone really well at Chantry - they believe in the trainees they employ, spot potential and encourage them. I am just grateful for being given the chance to show what I can do and realise my potential.

"I am 100 per cent behind this scheme and would encourage other people to find out more and get involved - it has been very satisfying and broadened my mind so I now have higher hopes for the future."

Main achievements:

- 149 local people assisted with job search, advice and guidance into work.
- 74 local people were assisted into training
- 58 local people were accessing driving and theory lessons
- 59 business/security grants were awarded to local businesses

Environment

'A high quality and sustainable built and green environment to promote a positive image and identity for Burngreave in the eyes of its residents and the rest of the City.'

The Environment theme focused on three major strands in 2003/2004 - improving the shopping area, parks and open spaces and increasing recycling in the area.

Key projects included:

- The Action Plan for the improvement of parks and open spaces has been completed along with improvements to Grimesthorpe Allotments, the play area in Abbeyfield Park and Pitsmoor Adventure Playground.
- 190 street lights have been installed/improved in response to residents' concerns about safety in poorly lit isolated areas.
- The street cleaning team in Burngreave was expanded from four to 12 with the employment of eight local people in response to resident concerns about the cleanliness of the local environment.
- 95% of businesses on Spital Hill have benefited from the provision of skips and subsequent waste management contracts, reducing the build up of unsightly waste in and around the shopping area.
- The Security and Environment Grants for Spital Hill have been very successful with over 50 grants being awarded. This has provided new shop fronts and security measures including security shutters and alarms.

Main achievements:

- 128 local people were advised/supported at the Recycling Matters shop on Spital Hill
- 57 businesses in and around Spital Hill were advised on waste management
- 55 local shops and businesses were improved through the Security Grant Scheme
- 21 sites were cleared around the BNDfC area
- 8 local residents employed on street cleaning initiatives
- 2 play areas have been improved in Abbeyfield Park and Pitsmoor Adventure Playground

Case Study:

Looking the part

Mr Hussein's reaction to why he became involved in the Security Grant Scheme was 'why not?' The money he received has helped him totally revamp the outside of the four properties he rents out to local businesses on Ellesmere Road.

A laundrette, restaurant, mini-mart and his own travel agency have now all had their windows replaced, brick work cleaned, new signage and security shutters put up.

"I would really like to thank New Deal and Saghir Ahmed, the Business Champion at BNDfC in particular for his hard work. I never thought it would look as good as it does - being involved in this scheme has made such a big difference.

"The improvements have changed the whole environment of the area and people have really appreciated what has been done - the shopkeepers are really pleased and some customers don't even recognise the place!

"The work was done in weeks - I would definitely encourage other people to take part."



Health

'The people of Burngreave will enjoy improved health and quality of life as well as benefiting from equal access to culturally sensitive local health and leisure services.'

Prevention is better than cure for the health theme so promoting healthy lifestyles was a key area for 2003/2004.

Key projects included:

- The Community Health Educators Course continues to provide local people with the knowledge, skills and confidence to deliver health education in their own communities. It is also a valuable stepping-stone to employment opportunities.
- A contribution from New Deal has enabled plans to be drawn up by Pitsmoor Surgery to extend the range of services they are able to provide within their practice.
- A women's health screening project was set up to give local women information about breast and cervical screening services which are free through GP services.
- A Halal Lunch Club has been set up in the area for Muslim elders, which provides nutritious food and social support.
- BNDfC has supported SADACCA to install a lift so that the elderly and disabled African-Caribbean residents can fully access the well-equipped day centre.

Main achievements:

- 125 local residents supported by health initiatives
- 45 local people trained in Community Health Education
- 975 halal lunches served to local elderly people
- 110 local women supported with health screening/information about screening services



Case Study:

Building confidence

Pauline Neita has lived in Burngreave all her life. Since giving up work to have her son Dayne, now five and a pupil at St Catherine's School, she has been keen to take up local opportunities for learning.

She has recently completed the Community Development and Health course and says it has given her lots of confidence and experience.

"The course was ideal for me as it fitted in with one of Dayne's nursery days. I didn't really know what to expect but I got the chance to do all sorts of things I hadn't done before, such as learning in a group and project work.

"I was delighted to get Level 3 in all the five subjects I studied and feel I've achieved a lot. I think New Deal is doing some great things - giving local people the opportunity to do this kind of course and maybe get a job locally. It's definitely given me the confidence to go on and do more in the future and I'd certainly recommend it to others."

Pauline is now keen to concentrate on the sign language course she is doing at Castle College, as she hopes to work with deaf children in the future.

Housing

'Through consultation and participation, the people of Burngreave will work together with other partners so that residents can live in comfortable, high quality and affordable homes in successful neighbourhoods, which will make Burngreave a popular place to live.'

The aim of this theme in Year 3 was to work closely with housing providers and owners to improve the local housing stock and improve confidence in the housing market.

Key projects included:

- Home Owners Maintenance Scheme provides small grants, free external property surveys and maintenance advice to owner-occupiers to enable them to improve and maintain their own homes.
- BNDfC funded the demolition of Woodside in return for a share in the land value and/or future development plans and to ensure the site didn't deteriorate into a health and safety hazard.
- The facelift of properties in areas visible from main routes through Burngreave generating a sense of pride in the area and increasing property values.



Main achievements:

- 128 properties benefiting from the Home Maintenance Scheme
- 398 properties demolished at Woodside
- 127 properties improved through an exterior facelift
- Housing Market Renewal and Housing Corporation funding secured for future property improvements and developments

Case Study:

Home sweet home

The demolition of Woodside was the best thing that could have happened to Margaret Douglas and her husband Robert - even after 21 years of living there.

Margaret is pleased the demolition took place because in her eyes there was no other answer to the problems that the estate was suffering from and it has given everyone the chance to start afresh, somewhere new.

"My new home is still in Burngreave and it is everything I have ever wanted - I love my house and we have a small garden with trees that I really enjoy. It is so quiet and peaceful compared to where we lived before.

"We have been in now just over 12 months and it has made such a difference to our lives. We were dealt with so considerately and everyone was so helpful when trying to find us a new home that it couldn't have gone better."



Over-arching

'Burngreave will be a strong and involved community with barriers to participation removed, young people fully engaged, positive communications across the area and the arts and the culture of our whole community fully celebrated.'

The Over-arching theme in Year 3 has been all about building community strength and increasing participation in local community activities.

Key projects included:

- Funding of Burngreave Community Action Trust to work with individuals and groups in the area so they can develop the capacity of local people to participate in the regeneration process.
- The Festivals Project supports Abbeyfield Multicultural Festival and three other community festivals each year.
- The Burngreave Messenger provides an independent view of regeneration in Burngreave and keeps us all informed about what's going on in the area.
- A number of childcare projects bring extra, subsidised childcare places and a proposed mobile crèche service.
- Recognising that some people in our community need support and advice to get onto the jobs and training ladder, the Over-arching Theme is funding Family Support and Advice Provision.
- The Creative Burngreave project brings grants for arts activities and training and placements for artists.
- BNDfC is supporting a number of young people's projects to support detached youth work and engage young local people in fun, positive activities.

Main achievements:

- 57,000 Burngreave Messengers delivered to local households
- 11,000 people attending the Abbeyfield Multicultural Festival
- 2,720 local residents benefiting from small grants
- 84 summer activities funded

- 80 local community groups publicised through the Messenger
- 70 local groups involved with Abbeyfield Multicultural Festival

Case Study:

A chance to shine

After a lot of hard work, Adam Taha is now in the process of setting up his own business promoting music artists. This is a massive achievement for Adam and he owes a lot to his experience as a trainee officer within Creative Burngreave.

"Creative Burngreave provides funding to talented, creative people to develop their skills, products and go even further, like me, and open their own business or provide a service to the community. In the end, this contributes to the sustainable growth of our community.

"My time with Creative Burngreave provided the platform for me to use all my creative ability, designing marketing material such as flyers to working on major marketing strategies. I had the opportunity to brush up on my skills and raise my self-esteem, working closely with managers. It also opened my eyes a lot more about the issues and the challenges that our communities are facing - it was an amazing experience."



Programme Finance and Employment

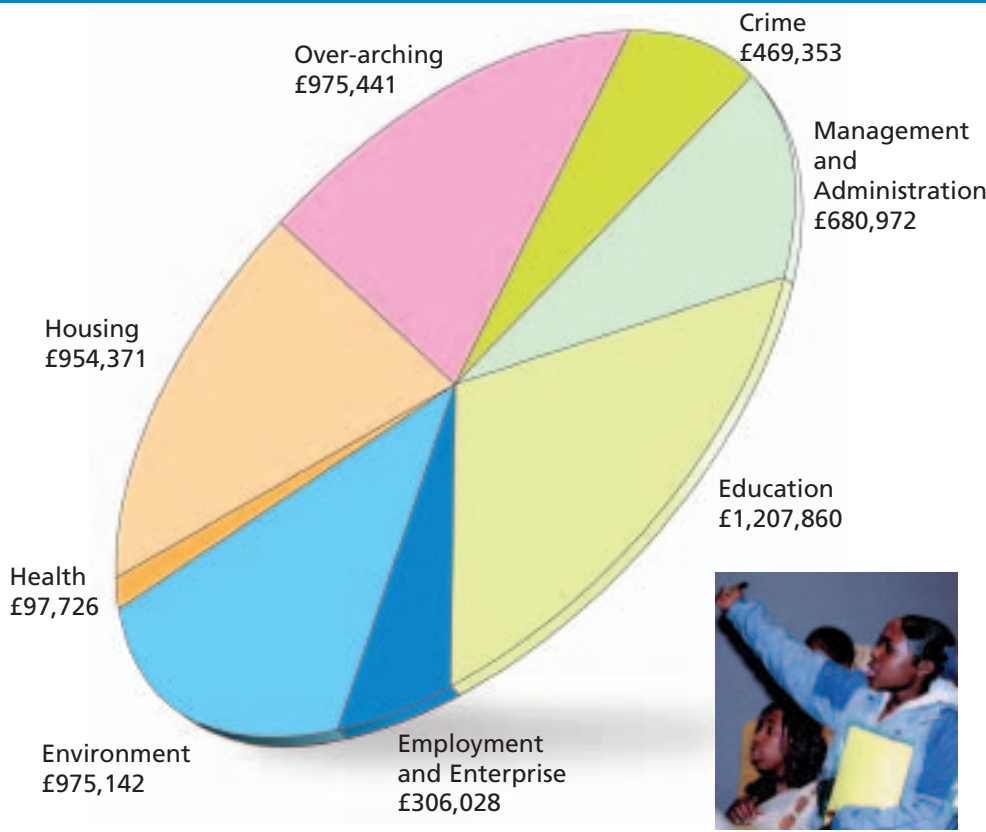


BNDfC and Government Office agreed the minimum amount of money to be spent in the area during year 3 was £4,712,701.

The actual amount of money spent in the year was £5,666,893. This reflects the progress BNDfC and its partners have made in getting on with developing solutions in response to the priorities of local people.

The breakdown of spend by theme was:

Finance



Total NDC Spend for 2003/04: £5,666,893

Programme Employment

The Burngreave New Deal for Communities programme has resulted in 188 jobs – more than 50% of them going to Burngreave residents.

The BNDfC programme team consists of 15 members of staff and 173 people are employed on projects funded by BNDfC.

In all, 13 different ethnic backgrounds are represented.

Chinese	1 (<1%)
Yemeni	18 (10%)
Black (African)	5 (3%)
Black (British)	8 (4%)
Irish	4 (2%)
Bangladeshi	1 (<1%)
Indian	2 (1%)
Somali	12 (6%)
(Black) Caribbean	22 (12%)
(White) British	59 (31%)
(White) European	20 (11%)
Pakistani	11 (6%)
Other	25 (13%)

Translated copies of this Annual Report are available in Urdu, Somali and Arabic.
Please contact BNDfC on 279 6932 for a copy.

اگر آپ کو اس رپورٹ کی کاپی اپنی زبان میں درکار ہو، تو اس نمبر پر رابطہ کریں: 279 6932

Haddii aad dooneyso in aad ku heshid nuqulkan ama warbixintan luqaadada, Fadlan lasoo hadal taleefan numberkan: 279 6932

279 6932



For further information on BNDfC or to find out more about accessing New Deal projects and services please call 0114 279 6932 or email: enquiries@bndfc.co.uk

Alternatively, visit the BNDfC Information Shop at 131 Spital Hill, Sheffield, S4 7LF
or call 0114 292 0464. Open Monday-Friday 10am-4pm